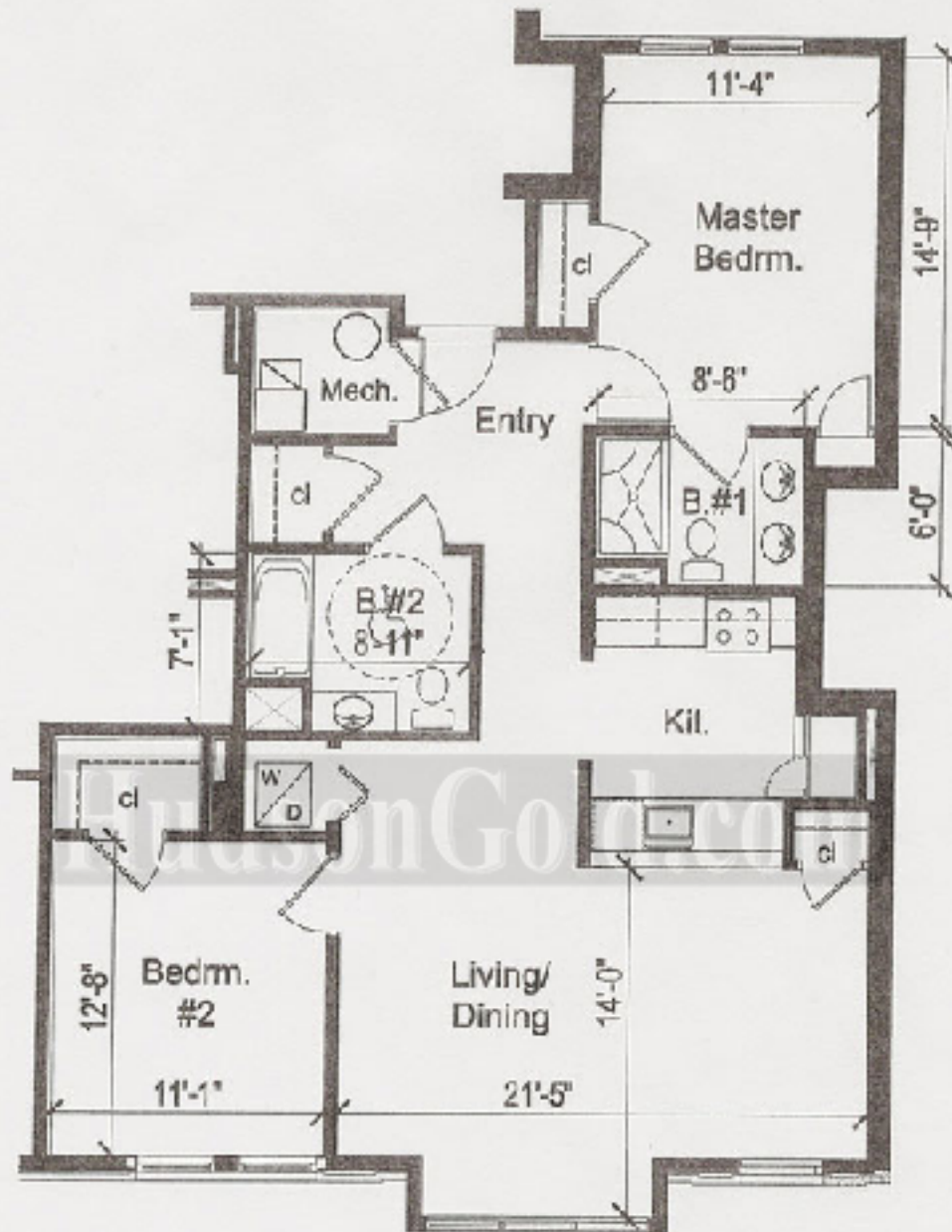


307 BARROW STREET - JERSEY CITY, NJ



UNITS 2D, 3D & 4D
 2 BEDROOM / 2 BATH
 1,125 S.F. ±

SCALE: 1/8" = 1'-0"

RAM

PREPARED FOR:

307 BARROW STREET, LLC
 Jersey City, NJ

DATE: FEBRUARY, 2010

NOTE: ALL DIMENSIONS AND AREA CALCULATIONS ARE APPROXIMATE, AND SUBJECT TO CIPM-GC DURING CONSTRUCTION.

FLOORS #2-4 KEY PLAN



LEONOR WITTELMANN DESIGN, MARTIN RUSSELL & ASSOCIATES PC

ARCHITECTURE, ENGINEERING & URBAN DESIGN

140 BAY STREET, SUITE 4
 JERSEY CITY, NJ 07310
 PHONE: 201-352-0107
 FAX: 201-352-0300



224 PL. HIGH STREET
 MILVILLE, NJ 08842
 PHONE: 908-397-4224
 FAX: 908-397-4157