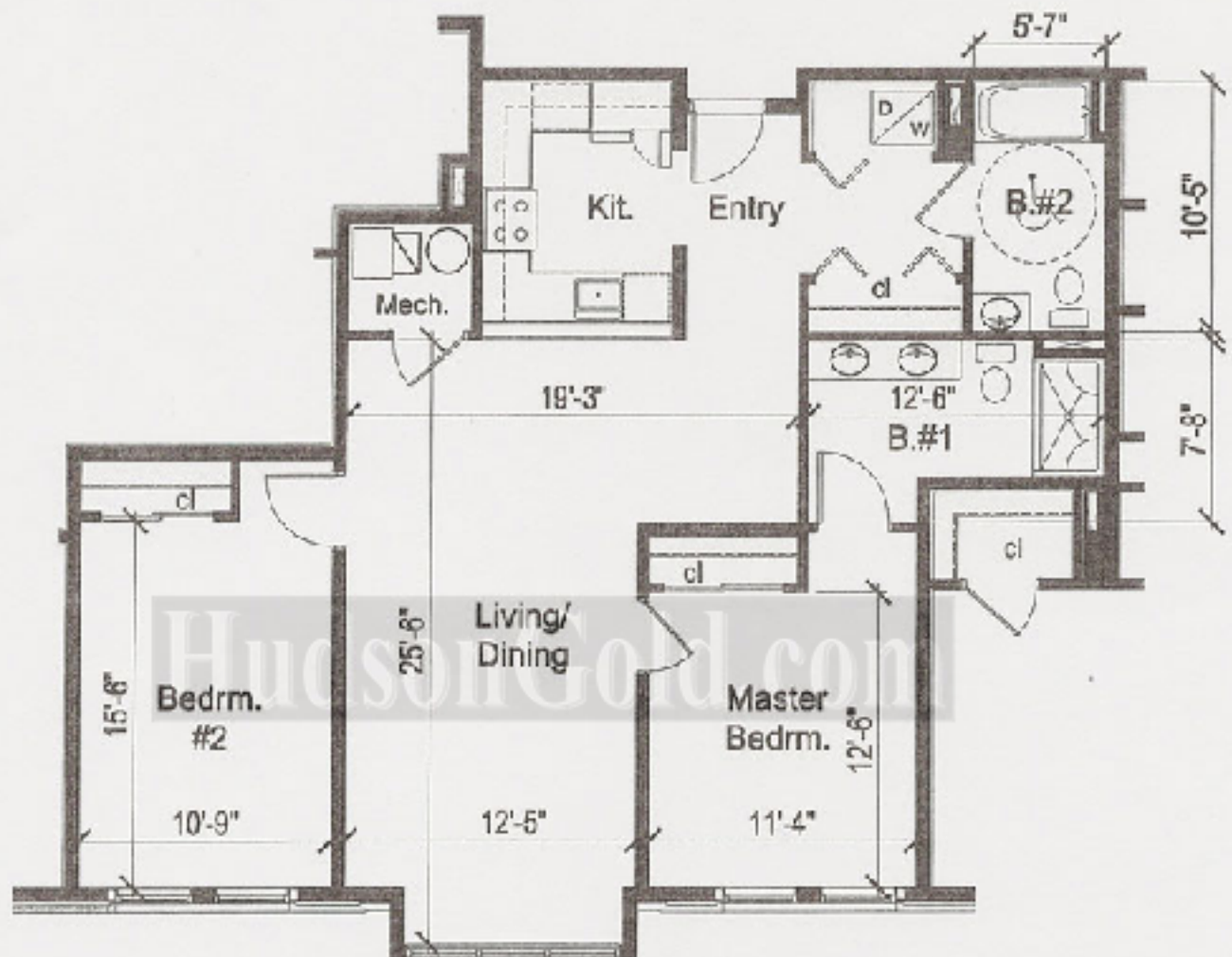


307 BARROW STREET - JERSEY CITY, NJ



UNITS 2C, 3C & 4C
2 BEDROOM / 2 BATH
1,125 S.F. ±

SCALE: 1/8" = 1'-0"

PREPARED FOR:

307 BARROW STREET, LLC
Jersey City, N.J.

DATE: FEBRUARY, 2010

NOTE: ALL DIMENSIONS AND AREA CALCULATIONS ARE APPROXIMATE, AND SUBJECT TO CHANGE DURING CONSTRUCTION.

FLOORS #2-4 KEY PLAN



RAM

LEONARD WINGELMANN, DEBBIE MARTIN RUSSELL,
& ASSOCIATES PC

ARCHITECTURE, ENGINEERING & URBAN DESIGN

180 EAVY STREET, SUITE 4
JERSEY CITY, NJ 07310
PH: 201-333-1212
FAX: 201-333-1239



225 N. HIGH STREET
MILBURN, NJ 07048
PHONE: 973-261-0266
FAX: 973-261-1271