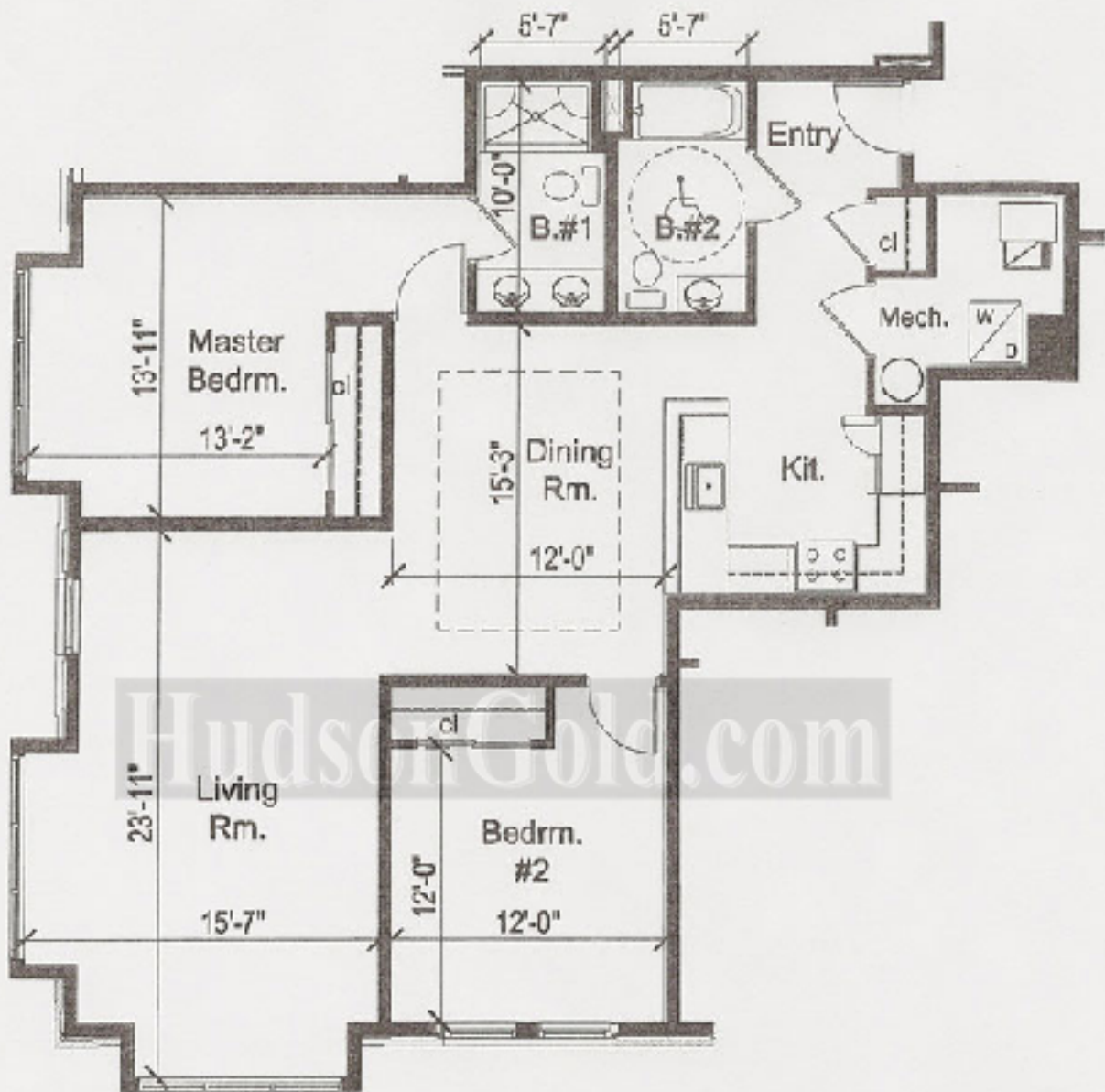


307 BARROW STREET - JERSEY CITY, NJ



UNITS 2B, 3B & 4B
2 BEDROOM / 2 BATH
1,335 S.F. ±

SCALE: 1/8" = 1'-0"

PREPARED FOR:

307 BARROW STREET, LLC
Jersey City, NJ

DATE: FEBRUARY, 2010

NOTE: ALL DIMENSIONS AND AREA CALCULATIONS ARE APPROXIMATE, AND SUBJECT TO CHANGE DURING CONSTRUCTION.

FLOORS #2-4 KEY PLAN



RAM

LIEBERMAN WILCOX EDWARDS DEUSCHER MARTIN RUSSELL
& ASSOCIATES PC

ARCHITECTURAL, ENGINEERING & URBAN DESIGN

140 BAY STREET, SUITE 4
JERSEY CITY, NJ 07302
PH: (201) 444-5872
FAX: (201) 444-5878



225 N. HIGH STREET
MILLSVILLE, NJ 08260
PH: (609) 683-9900
FAX: (609) 683-1571