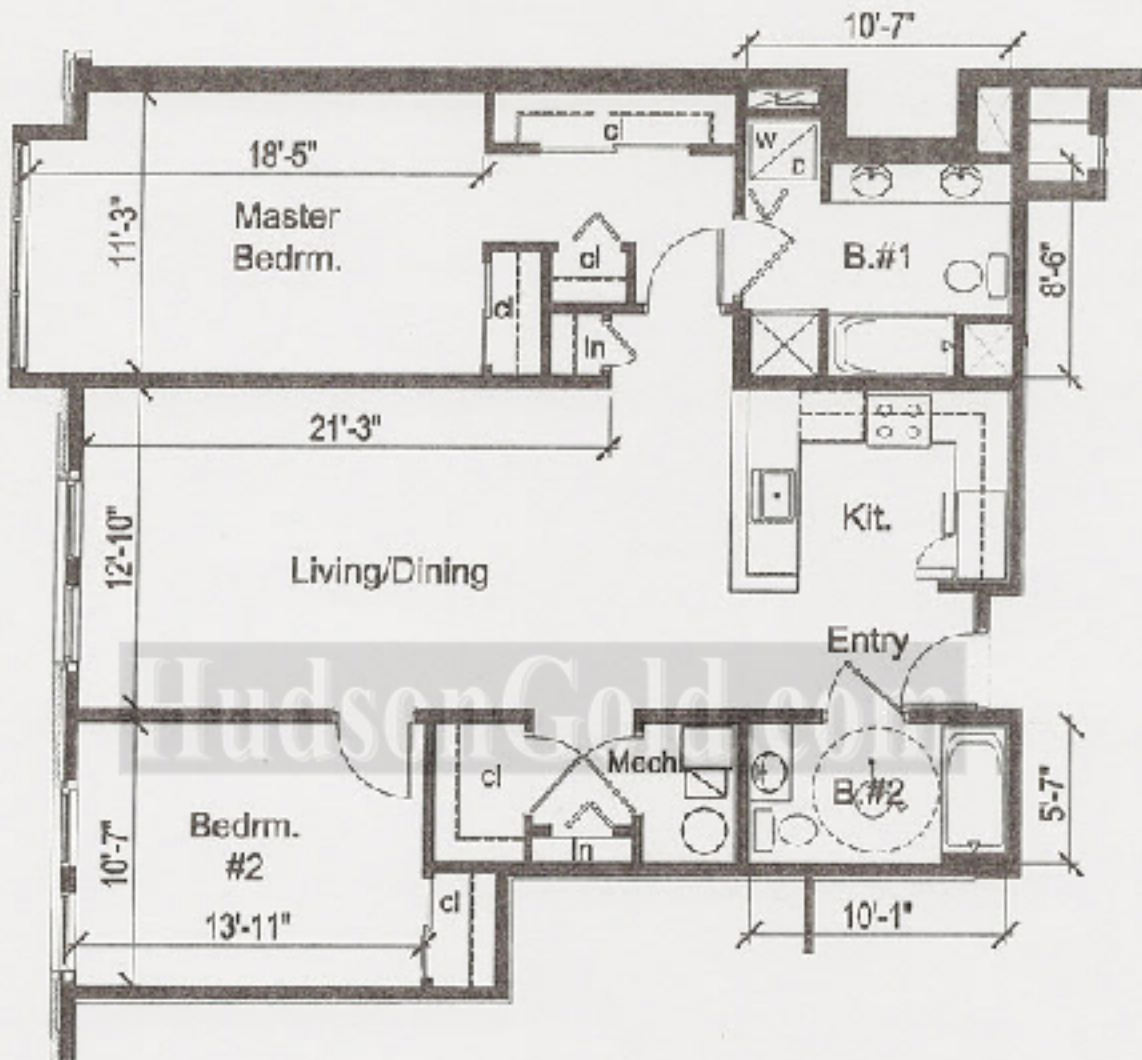


# 307 BARROW STREET - JERSEY CITY, NJ



UNITS 2A, 3A & 4A  
2 BEDROOM / 2 BATH  
1,230 S.F. ±

SCALE: 1/8" = 1'-0"

*Handwritten signature: aam*

PREPARED FOR:

307 BARROW STREET, LLC  
Jersey City, NJ

DATE: FEBRUARY, 2010

NOTE: ALL DIMENSIONS AND AREA CALCULATIONS ARE APPROXIMATE, AND SUBJECT TO CHANGE DURING CONSTRUCTION.

FLOORS #2-4 KEY PLAN



LINDSEY WINDRELLAN DEUNEE MARTIN RUSSELL  
& ASSOCIATES PC

ARCHITECTURE ENGINEERING & URBAN DESIGN

1519 AT STONEY, SUITE 4  
JERSEY CITY, NJ 07310  
PHONE 201-200-8010  
FAX 201-200-6000



20 N. HIGH STREET  
MORRISTOWN, NJ 07952  
PHONE 609-283-9600  
FAX 609-283-1517